



PRODUCTS

RoHol Program 2019

RoHol[®]
The Austrian Wood Composer

FOLLOW YOUR NATURAL INSTINCT

www.rohol.at

INSIDE

VENEERS

- Production
- Wood species
- Cutting
- Joining methods / Quality
- Fleece-It

VENEERED BOARDS

- Construction
- Veneered chipboards
- Technical plywood
- Flexi ply

WOW - WOOD ON WALLS

EXTRAORDINARY

- Crack
- Galaxy
- Rough
- Broncé+
- +F / Design joint
- End grain

SAUNA & SPA

- SaunaPly
- SPress®

READY-MADE FURNITURE COMPONENTS



Made by Austria



Located in Rosenau am Hengstpass, within a mountainous region of Upper Austria, we have been successfully operating as a family-run business for almost 35 years.

A strong partnership with the surrounding forests (our main supplier) naturally rests on the active protection of the environment. RoHol continually endeavours to develop the most resource-conserving processing operations possible, and routinely works to optimize the environmental performance evaluation of the company.

Alongside the high-quality of our products, it is our innovative spirit that has contributed to our success in becoming the sole Austrian manufacturer within the international market and a leading producer of luxurious wood veneers, veneered boards and plywood. Only the most beautiful tree trunks are processed into RoHol wood veneers and therefore, the veneer is also the finest and most elegant product that can be manufactured out of a raw natural material like wood.



SIMPLY SYMPATHETIC. JUST EVERYTHING EXCEPT USUALLY.

Our extensive range of products has much to offer; whether relating to design, aesthetics, construction or how they feel to the touch. If however, you are unable to find the product of your dreams in our standard range, then we will be more than happy to customize your ideal product for you in line with your specifications.

In this fashion, many unique projects have already come into existence worldwide. Individuality in a nutshell!

ALWAYS CUTTING EDGE.

RoHol is the specialist when it comes to the production and processing of wood veneers and currently, our range offers unrivalled variety. However, we are certainly not complacent about being the best at what we do! We continually explore new innovative ideas. We know that what is sought after today may be forgotten tomorrow and so we always aim to stay one step ahead of the latest trends.

RoHol stands for high quality, individual customization options and design - MADE BY AUSTRIA.

MANUFACTURE OF HIGH QUALITY VENEERS

Our extensive selection of wood veneers, alongside the many options on offer for further refinement, mean that almost any veneer-desire can be satisfied at RoHol. We have the whole spectrum; whether light to dark, elegant to spirited. Dive deep into our veneer compendium and discover for yourself our RoHol world.

VENEERS FROM ROHOL - PRODUCTION

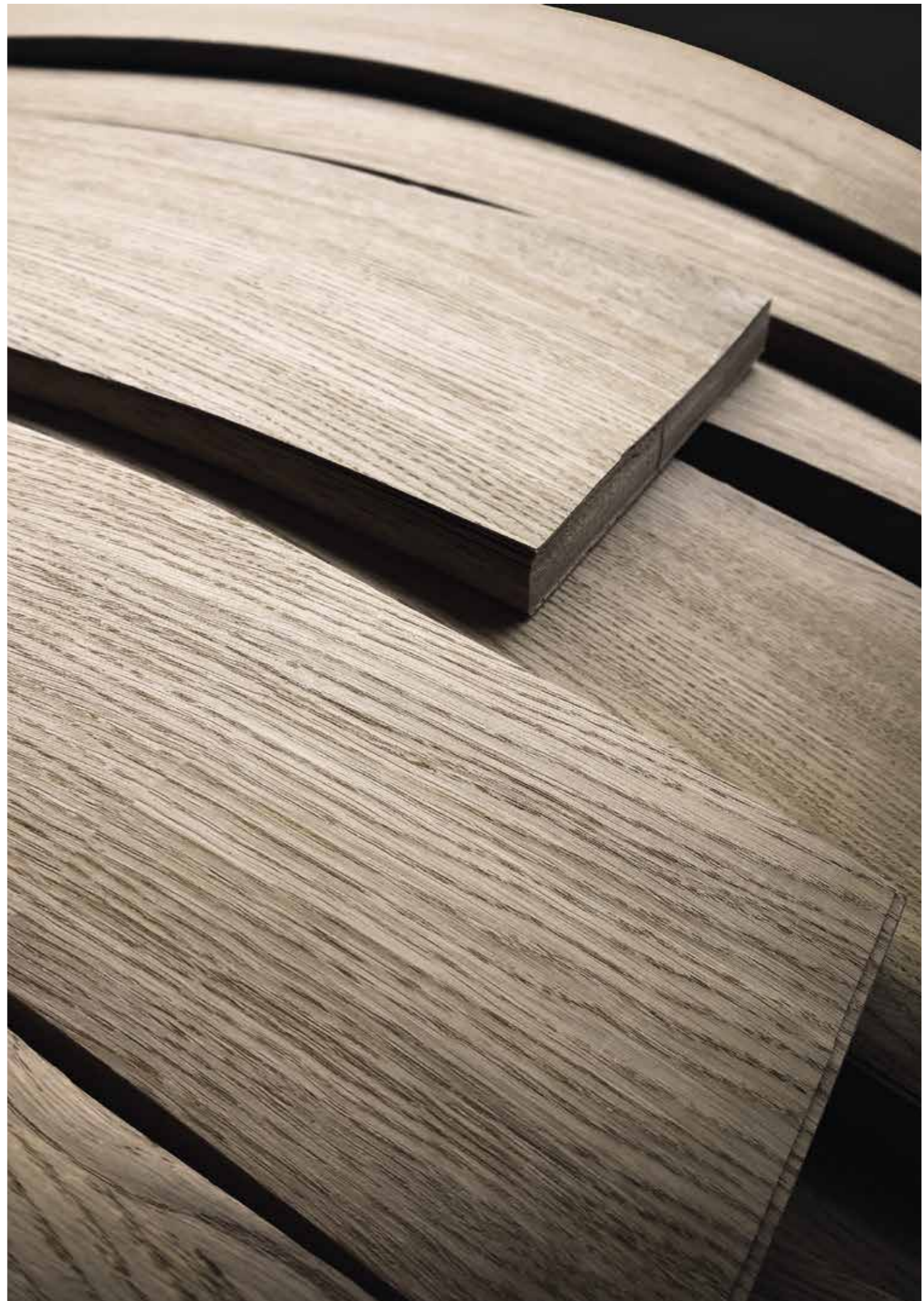
Logs that had been debarked and cut to length are steamed in steam pits, depending on the wood species or type of wood.

Only the highest quality logs are acquired and used for RoHol sliced veneers. After cutting to length, cutting into individual trunk sections and mild damping, they are either machined on a slicer or the stay log lathe to high-quality veneers.

Once the sliced veneers have been dried and pressed, they are clipped and electronically measured. Images are automatically captured and the now finished RoHol veneers are packaged.



Production ↑

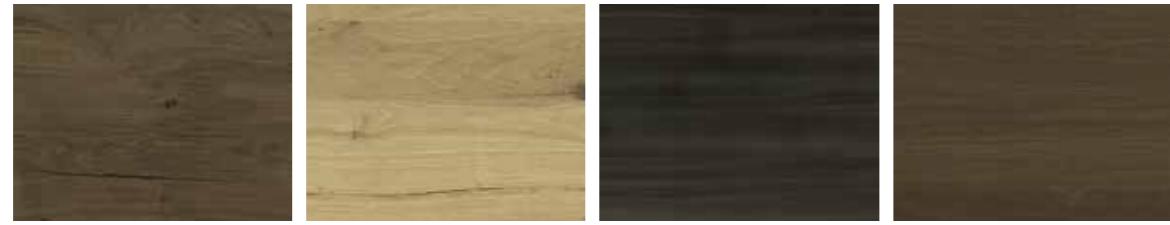




Maple Alder Burl Birch Beech



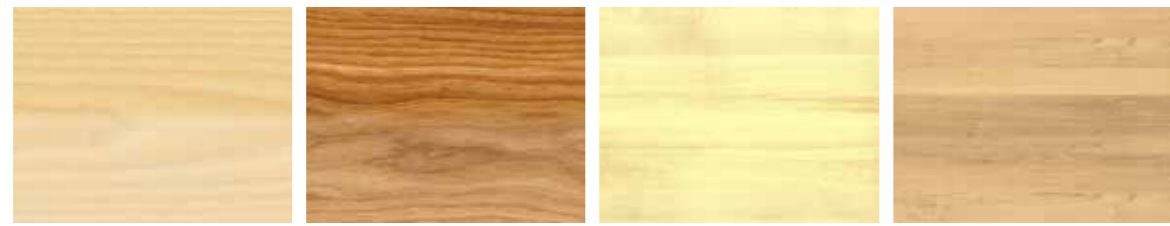
Hearted Beech Caroline-Pine Oak european Oak Crack



Oak Crack Broncé+ Oak Npur Oak fumed Oak Broncé+



Oak Old Oak Rough Oak knotty Red Alder



Ash Ash colorful Aspen Aspen Broncé+



Spruce Spruce knotty Broncé+ Spruce knotty Hemlock



Hemlock Broncé+ Hemlock Pur Sweet Chestnut Scotch Pine



Pine knotty American Cherry Cherry european Larch



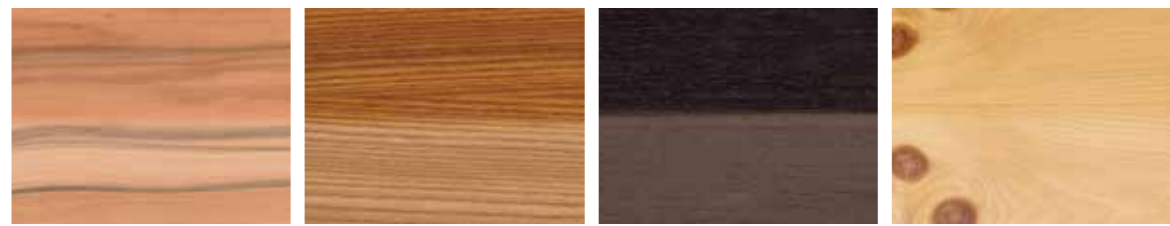
Larch Old Larix Linden Maple



American Walnut Walnut european Oregon-Pine Robinia



Sapeli Silver Fir Teak Tekka



Tineo Elm Wenge Stone Pine

Veneer selection



Our extensive selection of wood veneers, alongside the many options on offer for further refinement, mean that almost any veneer-desire can be satisfied at RoHol.

More types of wood are available on request from your RoHol representative.



copyright SECO | Saudi Arabien



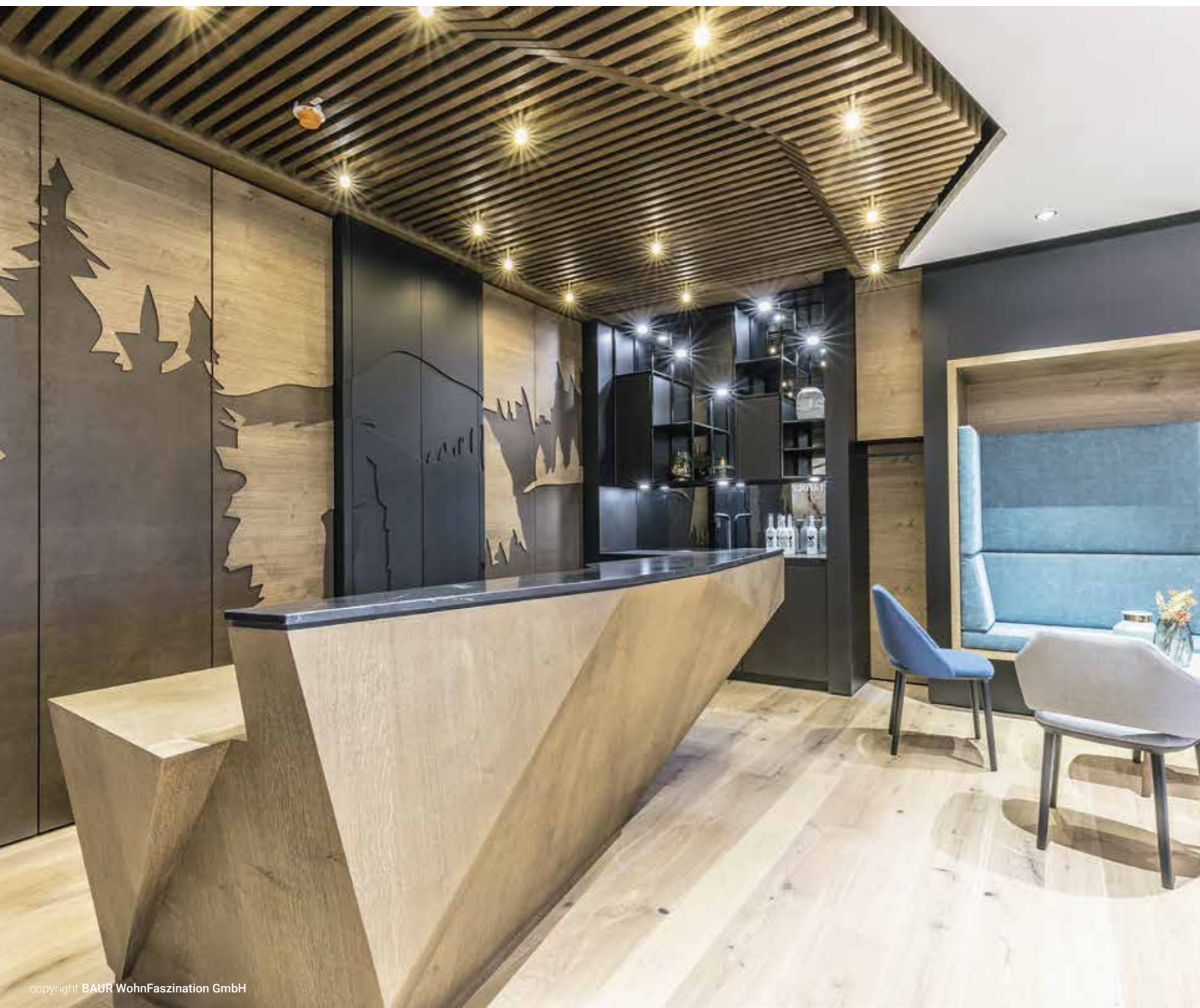
copyright SECO | Saudi Arabien



copyright SECO | Saudi Arabien



copyright SECO | Saudi Arabien





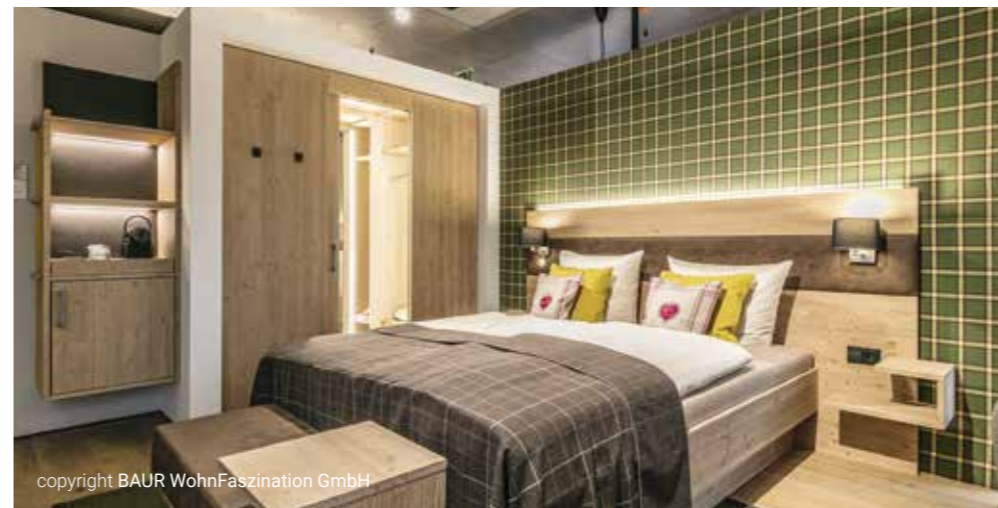
copyright BAUR WohnFaszination GmbH



copyright BAUR WohnFaszination GmbH



copyright BAUR WohnFaszination GmbH



copyright BAUR WohnFaszination GmbH

CUTTING TECHNOLOGY SLICED

Handling wood with care.

Each precisely sliced leaf allows the identity of the tree to be duplicated on a variety of objects, shapes and surfaces, without ever losing its natural properties. This sets veneer far apart from artificial imitations.

Why should you prefer veneer?

- 100% solid, genuine, high-quality wood
- A sustainable, naturally growing material
- One-of-a-kind through and through
- Allows creative freedom of form and design



Cutting technology



ORIGIN OF HIGH QUALITY VENEER

By default, most of our veneers are cut to 0,6 and 0,9 mm.

Hardwoods begin with 0,6 mm and can be sliced up to 2,5 mm.

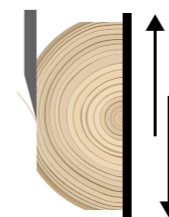
In softwoods it is from about 0,7 to 2,5 mm.

Veneer is one of the finest products made from wood. With so much beauty hidden in every tree, a wide variety of veneer patterns is created during production, depending on the cutting technique used.



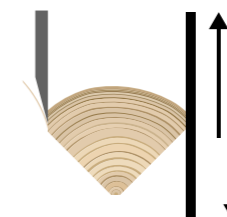
SLASH – FULL CROWN CUT

In this technique, a log is sliced through the heart from the outside. The initially produced veneers show a lively slash-grain texture, as the annual rings are cut at a very flat angle. The closer the cut comes to the centre of the log, the more figured the veneer pattern becomes.



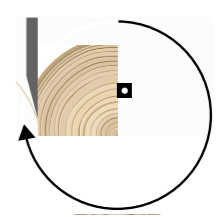
STRAIGHT-GRAINED – QUARTER CUT

The log is usually cut into quarters. It is then fixed in a position that allows the cut to be made at right angles to the annual rings. This creates a predominantly striped or planked veneer pattern.



STRAIGHT-GRAINED – FLITCHES

The quartered log is fixed with the cut side on the clamping beam. The rotation of the fixed log creates an eccentric rotational movement. The annual rings are cut almost at right angles.



JOINTING METHODS - VENEER CEILING

Basic procedure.

The sliced veneer is joined by hand to create a veneer board. The illustrations below show the possibilities that the jointing methods open up.

This allows you to decide the appearance of the board and how to optimally use it to give the look and feel of the selected product that something special!

Simply everything but ordinary!

There are no limits to the impressive benefits of veneer.

RANDOM-MATCHED

Veneers from at least four different veneer packs are mixed and jointed. The result is a so-called "random-matched" structure, visually similar to laminated solid wood. To emphasise the natural character, some sapwood is consciously included in the types of wood.

SLIP-MATCHED

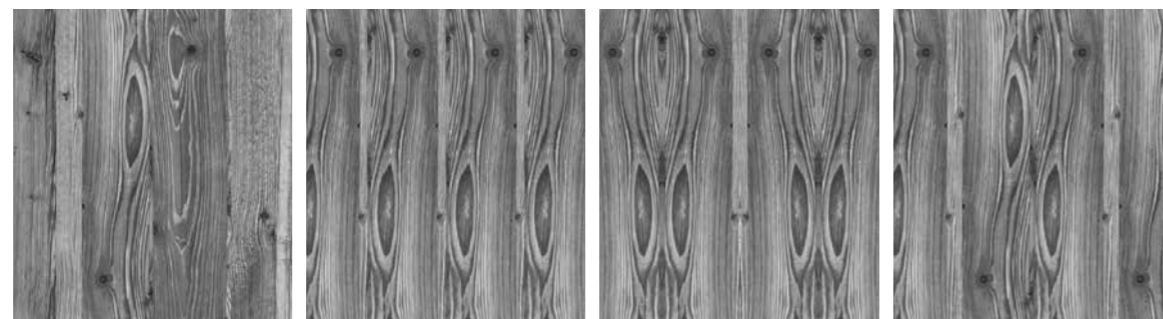
When veneers are slip-matched, the same veneer side always faces „up“, resulting in a uniform colour finish. Rift veneers or veneers with evolved, beautiful slash can be „slip-matched“.

BOOK-MATCHED

Book-matched means that the front and back of the veneer sheets of a veneer bundle are alternately jointed. This means that a „right“ and a „left“ veneer side always alternate.

SWING-MATCHED

Reverse slip is always used in combination with another jointing method. By turning the veneer strips, you get a varied and consistent colour appearance with just a few veneer bundles.



QUALITY - UNIQUENESS

Quality is a prerequisite.

Quality is a prerequisite here and not simply a matter of an opinion! Every RoHol product leaves our company grounds following lots of tender loving care. There are hardly any standardized quality controls at RoHol because natural products bring with them an uncontrollable uniqueness. Instead, at least one manual quality control occurs after each processing step.

Fine veneer brings out the noblest character of the wood, its very own qualities, its distinctive lifelines – and it does it in unrivalled variety.

slip-matched or book-matched	IA	<ul style="list-style-type: none"> Series – image matching, at least 4 panels present a continuous log-aligned veneer pattern Straight, quarter cut veneers Centre joint 	Front quality with serial sequence
	I	<ul style="list-style-type: none"> Straight, quarter cut veneer with a slight cut of crown or full crown cut veneer Flawless fine veneer sheets regarding the quality of both the veneer and the workmanship Selected veneers, straight-grain, short-grain slash or broad slash-grain, book-matched or slip-matched 	Front quality
	A-B	Standard quality: Quality I and II mixed	Casing, standard quality
	II	Pin-knots, slight discolorations, low proportion of sapwood, unobtrusive bastard cuts, isolated galls and ingrowths allowed to a limited extent	Front, backside quality
	III	Discolouration, sound knots, End-stain allowed. No open defect or chipped veneers allowed	Casing, backside quality
random-matched	NA	Selected quality I – balanced random matched into planking appearance	Front quality
	N	Quality A-B – balanced random matched into planking appearance from 4-6 bundles	Standard front & casing quality
	N2	Quality II – balanced random matched into planking appearance from 4-6 bundles	Casing, backside quality
	Crack	Distinct cracks and knots; random-matched with dark substrate (optional brown, black or white substrate)	-
	Npur	Quality with all the wood 's natural features found in the particular type of wood, natural interplay of colours, cracks, knots, knobs, random-matched with dark substrate	-
	NR	Discoloration, knots, discoloration and flakes allowed, occasionally chipped veneers; knotty veneers with black knots and open knotholes – random-matched	Casing, backside quality
	GZ	Balance veneers with no quality requirements, open defects allowed; type of wood as per customer request	-
Blind	Balance veneers with no quality requirements, open defects allowed; type of wood as selected by factory	-	
Paper	Balance paper (Colour as selected by factory)	-	

Jointing methods / Quality





copyright SECO | Saudi Arabien



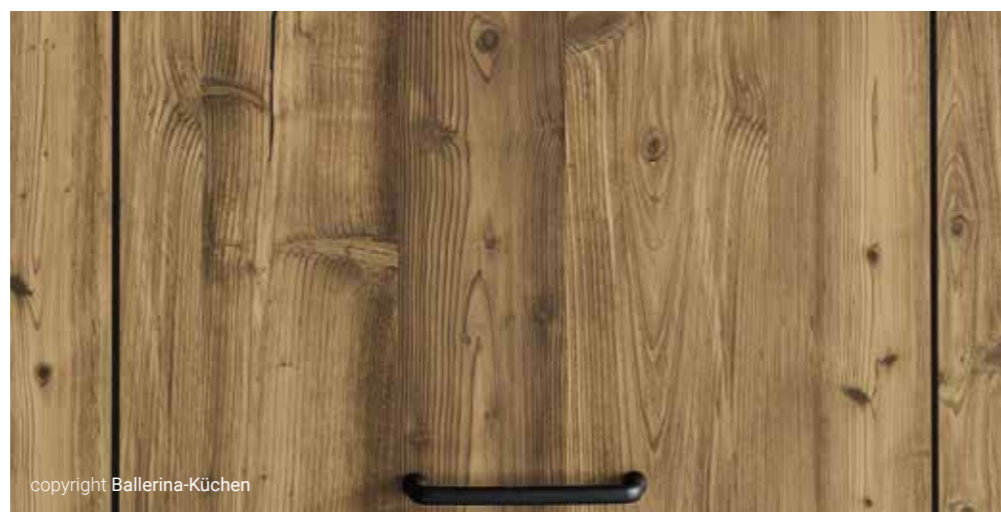
copyright SECO | Saudi Arabien



copyright SECO | Saudi Arabien



copyright SECO | Saudi Arabien





copyright Wienerwald München



copyright Puertas Golpe



copyright Wienerwald München



copyright Puertas Golpe

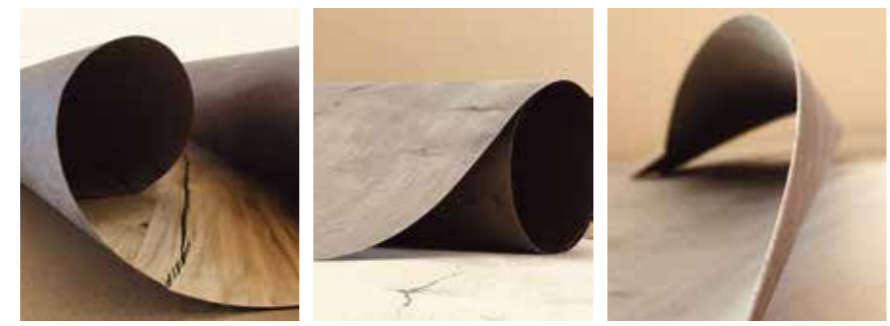
FLEECE-IT - NOBLE VENEERS SPLICED AND PRESSED ON FLEECE

Veneers spliced and pressed on fleece.

Fleece-It is a new product line from RoHol, which represents a selection of the most popular noble veneers spliced and pressed on fleece. Fleece-It is available in more than 100 species of wood and many grades and textures, with the following standard range in stock.

Standard-Dimension

2800 x 1250 mm (other dimensions on request)



Fleece-It ↑

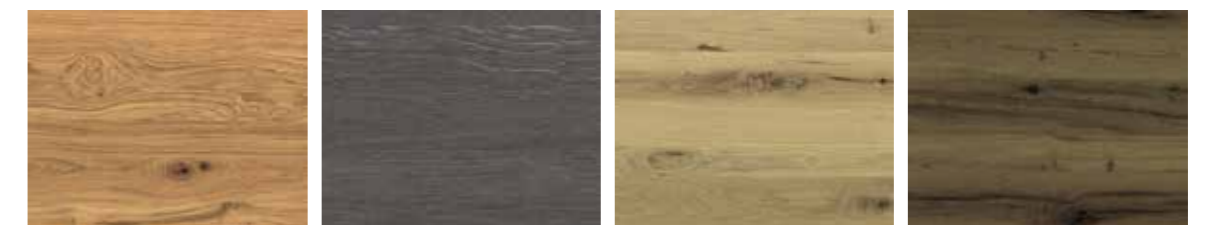
THE ADVANTAGES - STABILITY

Fleece-It advantages.

The fleece-back lamination provides an optimum balance of flexibility and stability. It can be easily glued to a variety of substrates, pressed on and so manufactured with the desired surface finish. The flexibility of Fleece-It also allows curved and round materials to be finished with a refined yet naturally beautiful wood surface.

- Easy to machine and work with
- Decorative, dark background lets cracks come to life
- Can be sanded, brushed, painted and oiled
- Excellent for curved sections
- Can be rolled
- Shipping of small quantities in a cardboard box is available
- Available in more than 100 noble veneers

STANDARD-PROGRAM



Oak knotty Oak grey Npur Oak Npur Reclaimed Oak



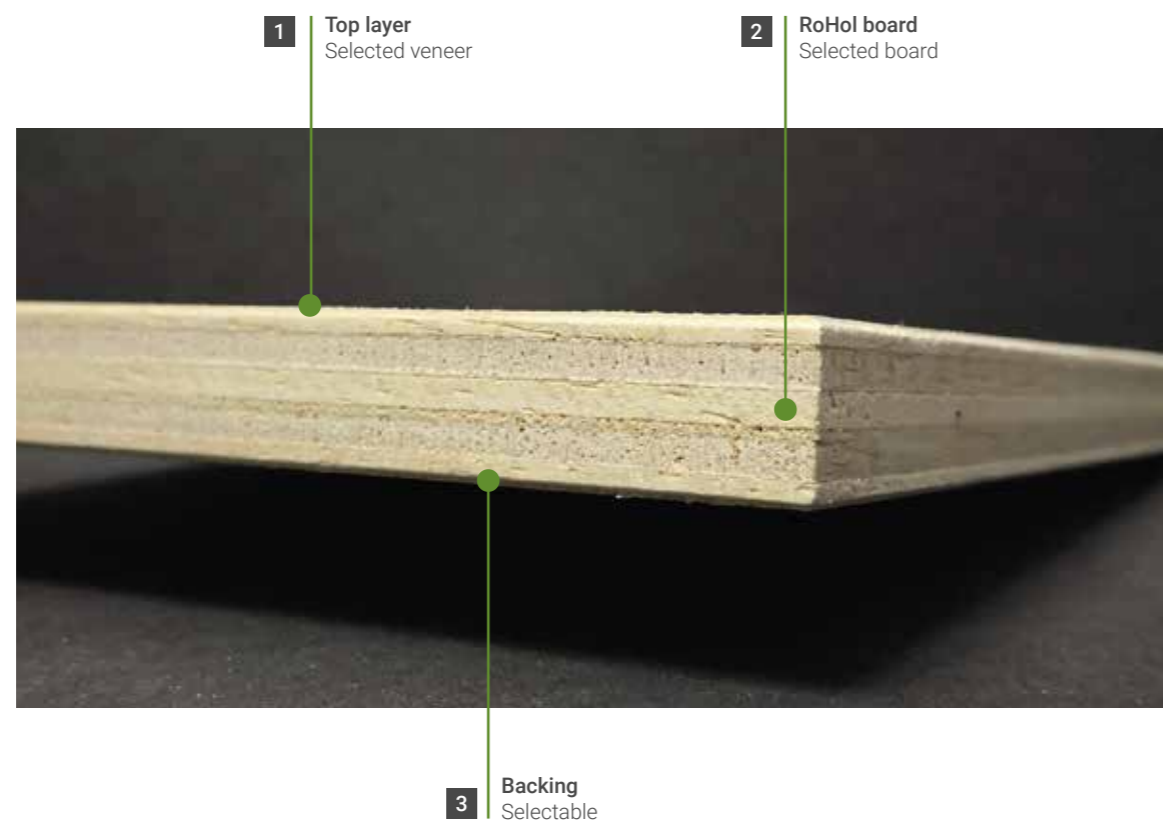
Oak knotty Rough Oak Broncé+ Npur Oak Crack Larix

VENEERED BOARDS - CONSTRUCTION

Our veneered boards stand out because of the diversity in workmanship and application. RoHol transforms various substrates into designer veneer objects; clearly evidencing our strengths and individuality.

Additional substrates -

Our strength lies in the unlimited composition of veneered boards.



Veneered boards construction



DESIGN AND DIVERSITY - FOR THE DISCERNING

With over 100 species of wood and over 20 matching, surface and structure options.

Whether slip matched, book matched or with a plank character, the range of design options we have on offer simply cannot be beaten. The further processing of our noble veneers into boards, assembled in every way possible, means that the potential uses are unlimited! Whether as wall or ceiling cladding, as doors, furniture, saunas or kitchens, whether in private or public arenas, in churches or in clubs, in car construction or in shipbuilding, RoHol provides the perfect solution to any assignment. Design-oriented aesthetics via solution-oriented thinking!

1 TOP LAYER

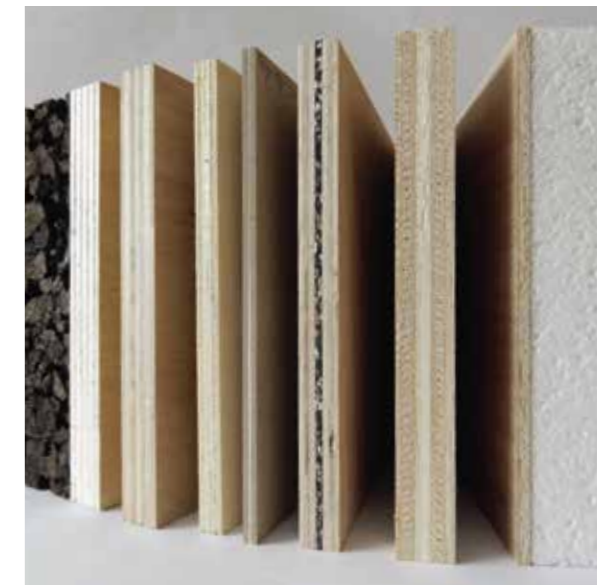
You decide which unique veneer you want on your veneered boards and simply choose the colour and visual effects yourself.

2 ROHOL BOARD

Choose between many different veneered boards – chipboard, MDF board, blockboard, plywood board or a special technical solution!

3 BACKING

Basically, we always recommend veneered boards with counter veneer. The counter veneer should have the same thickness as the veneer of the top layer to ensure optimum stability. Asymmetric board structures are possible but needs to be clarified beforehand. Please contact us at any time if you have any questions or queries.





copyright Peter Max Vertriebsgesellschaft m.b.H



copyright Peter Max Vertriebsgesellschaft m.b.H



copyright Peter Max Vertriebsgesellschaft m.b.H



copyright BAUR WohnFaszination GmbH



copyright BAUR WohnFaszination GmbH



copyright BAUR WohnFaszination GmbH

HIGH-QUALITY VENEERED BOARDS

Our veneered boards stand out because of the diversity in workmanship and application. RoHol transforms various substrates into designer veneer objects; clearly evidencing our strengths and individuality.



■ VENEERED CHIPBOARD

Particle boards, also referred to as chipboard (P2 - P5), are the largest and the best-known subgroup of wooden board material. They are manufactured from different-sized wood chips which are bound together and then pressed into multi-layer boards, comprising between three and five sheets. The outer-layer is almost always made from much finer chips, especially when a face veneer will be added for decorative purposes (e.g. for furniture).

Dimensions

2.800 x 2.060 mm
2.790 x 2.060 mm

Thicknesses

5 | 7 | 8 | 9 | 11 | 13 | 14 | 16 | 17 | 19 | 20 | 23 | 25 | 26 | 29 | 33 | 39 | 50 mm



■ VENEERED BLOCKBOARD

Blockboard is a wood based panel, made up of a core of softwood strips that are placed edge to edge, sandwiched between face or backing veneers, and then bonded together under high-pressure (technical standard DIN 68705-2). Even when exposed to fluctuating climatic effects, Blockboards remain stable in their form, bend-proof and highly-durable. They are also very light and have an average density of 470 kg/m³. The density varies according to the wood type.

Dimensions

2.800 x 2.060 mm
2.500 x 1.250 mm

Thicknesses

16 | 19 | 26 mm

Special Features

- Thicknesses with rotary-cut backing veneer: 13 - 50 mm
- Thicknesses with chipblock/softwood backing veneer: 17 - 39 mm
- Thicknesses with MDF backing veneer: 16 - 39 mm
- Thicknesses with softwood middle strips: 17 - 39 mm



■ VENEERED MDF BOARD

Medium-density fibreboard, or MDF- Board for short, is an engineered wood product. It is created by gently compressing finely crushed, mainly bark-free, coniferous wood fibres. The result of this process is a wood product which is consistently homogeneous in both its length and width.

Dimensions

2.800 x 2.060 mm
2.430 x 1.210 mm

Thicknesses

7 | 9 | 11 | 13 | 17 | 19 | 20 | 23 | 26 | 29 | 39 mm



■ VENEERED BIRCH PLYWOOD BOARD

Birch plywood is known for its superb strength and stiffness properties. The excellent moisture resistance makes this substrate a product of choice.

Dimensions

2.500 x 1.250 mm

Thicknesses

6,5 | 9 | 12 | 15 | 18 | 21 | 24 | 27 | 30 | 35 | 40 mm



■ VENEERED HARDBOARD

Is a fibreboard manufactured in the wet production process with a gross density of appr. 950 kg/m³.

Dimensions

2.800 x 2.060 mm
3.030 x 1.200 mm

Thicknesses

2,6 | 3 | 4 | 5 | 6 mm



■ VENEERED GYPSUM FIBRE BOARD

Our range of fireproof boards includes both gypsum boards and cement boards A1 (cement-bonded particle boards).

Dimensions

2.550 x 1.250 mm
3.090 x 1.250 mm

Thicknesses

13 | 17 | 19 | 22 | 26 mm

Additional substrates. Our strength lies in the unlimited composition of veneered boards.

The above-mentioned materials merely represent our standard program.



HIGH-QUALITY TECHNICAL PLYWOOD

A wide variety of sectors within the manufacturing industry are already reaching out for RoHol products. Renowned companies such as DANA (door manufacturing industry), HABA (children's furniture) and Hali (office furniture) as well as various partners in the ski, vehicle, stage platforms and shipbuilding industries are readily receiving materials taken from both the RoHol standard program, and also materials developed especially as customer-inspired solutions.

The requests are extremely varied and so it is of great importance to us here at RoHol that we have an extensive range of aesthetic options available, as well as being able to offer solutions which boast optimized functionality, technical perfection and can be tailor-made according to individual needs and desires.



Technical plywood



ALUPRESS.

The moisture-resistant board as solution for your requirements.

For years, RoHol has been supplying top-quality door manufacturers with RoHol Alupress moisture-resistant boards, which are used in the manufacture of doors with climate classification (DIN und ÖNORM).

Special features for AluPress plywoods

- Oxidation-protected aluminium inserts on request - No risk of corrosion even after many years of use
- Creep-resistant, non-thermoplastic gluing of aluminium with top layers can be supplied
- Significant capacity increase in door production at further processing temperatures up to 120 °C
- AW100 boil-proof and waterproof gluing of aluminium with top layers
- Board widths up to 1830 mm can be supplied
- Especially suitable for front doors and hallway doors

Dimensions

2500 x 1260 mm
2150 x 1050 mm

Thicknesses

Depending on the structure 4,5 – 6,5 mm
Other thicknesses on request

Versions

Plywood and aluminium, hardboard and aluminium, eucalyptus-fibre and aluminium, HDF and aluminium, etc.

Aluminium thickness

Standard: 0,3 mm
0,5 mm can also be supplied on request

Special features of AluPress

- Paintable fibre qualities available



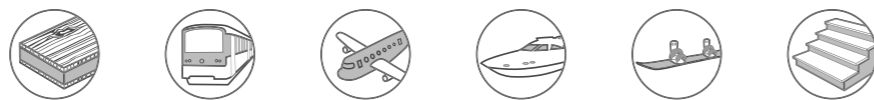
copyright Volkner Mobil GmbH



copyright Volkner Mobil GmbH

TECHNICAL PLYWOOD - FLEXIBLE PLYWOOD

RoHol Flexi ply / FlexiPress is a highly flexible, 3-ply construction, special plywood. It is composed of layers of thin plies and so will quite readily bend into various ,curved' shapes, thus facilitating production and increasing application possibilities. The arc formed by the bend is perpendicular to the grain direction of the face.



■ FLEXIPRESS - FLEXIBLE PLYWOOD

Pretty bendy.

RoHol Flexi ply or FlexiPress is a highly flexible, 3-ply construction, special plywood. It is composed of layers of thin plies and so will quite readily bend into various ,curved' shapes; the arc formed by the bend is perpendicular to the grain direction of the face.

Dimensions

„Column“
2500 x 1250 mm, 2500 x 1830 mm
„Barrel“
1250 x 2500 mm, 1830 x 2500 mm

Thicknesses

5 mm
7 mm
8 mm (+ 0,2 / - 0,5 mm)

Bonding

Moisture resistant interior, sauna-suitable bonding is also available on request

Bendingradius (Thickness / Radius)

Flexi ply
5 mm, appr. 85 mm | 7 mm, appr. 95 mm | 8 mm, appr. 100 mm
FlexiPress
5 mm / 7 mm / 8 mm, appr. 20 mm

Potential uses

Anywhere where there is a need for rounded shapes/forms, for example column cladding, formwork, countertops and exhibition stands, boats and car interiors etc.



■ FLEXIPRESS - „BASIC“ AND „FINISH“

Also pretty bendy.

FlexiPress ,basic' and ,finish' by RoHol is a highly flexible 2 or 3-ply construction special plywood. It is composed of layers of thin plies and so will quite readily bend into various ,curved' shapes.

Dimensions

2500 x 1250 mm
2500 x 1830 mm

Thicknesses

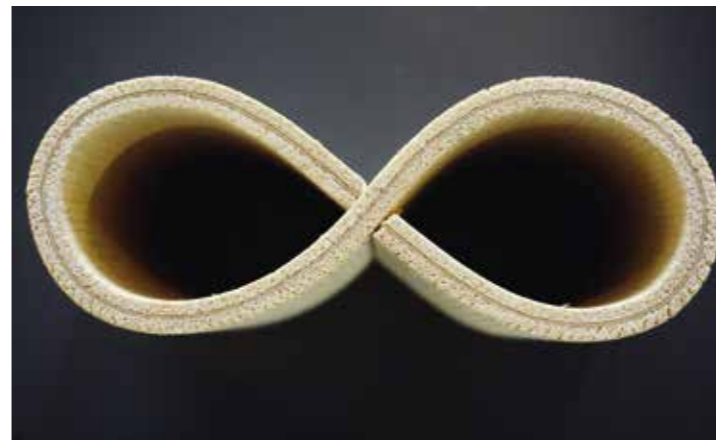
3 - 4,5 mm

Bonding

Moisture resistant interior / also available on request in sauna-suitable quality

Wood species

available for the whole veneer assortment



Technical plywood





copyright EWE Küchen Gesellschaft m.b.H.



copyright EWE Küchen Gesellschaft m.b.H.



copyright Private house



copyright BAUR WohnFaszination GmbH



copyright BAUR WohnFaszination GmbH



copyright Fruhstorfer Hotel Hofbräuhaus | Firma Waldbauer



copyright Fruhstorfer Hotel Hofbräuhaus | Firma Waldbauer

WOW - WOOD ON WALLS

Simply practical - Simply stylish - Simply WoW

WoW which, by the way, stands for Wood on walls, is our new, innovative and customizable design system for interior walls. The planks of raw natural wood are resource-friendly, easy to handle and the top-quality processing produces a surface which is warm and appealing and integrates perfectly into timeless interior designs.

Standard-Dimension: 970 x 185 mm

Thickness: 3 mm / appr. 6,5 mm for Solid Old products

Total thickness: 4 mm / 7,5 mm for Solid Old incl. adhesive tapes

Product construction: luxurious wood veneer on wood-fibre beams

Program: Maple, Oak Broncé+ Sprinkled, Oak Nasty, Oak Crack, Oak grey Sprinkled,

Oak Rough, Oak Rough Sprinkled, Spruce Broncé+, Spruce Broncé+ Sprinkled,

Solid Old brown, Solid Old grey, Stone Pine, Stone Pine Sprinkled



WoW



PRACTICALLY - TIMELESS

Practical and contemporary designs.

WoW suits contemporary interior design down to the ground. It's not merely the format but also the diversity within the WoW line that really meets the needs of the modern interior design spirit and definitely takes care of providing you your own personal WoW effect at home! Rest assured - the whole WoW line is produced using timber from sustainably-managed forests. The PEFC™ certificate not only indicates the use of sustainable forestry but furthermore, it guarantees that the natural habitats for local flora and fauna are conserved and preserved; for you, for us and for the future!

QUICK INSTALLATION

With the help of double-sided adhesive strips that are pre-attached at the factory, the installation of WoW becomes very easy and uncomplicated. The convenient size also guarantees easy transport and that the panels can be installed by one person working alone!



Maple



Oak Broncé+ Sprinkled



Oak Crack



Oak grey Sprinkled



Oak Rough



Spruce Broncé+



Solid Old brown



Solid Old grey



Stone Pine





Product: WoW - Oak Crack



Product: WoW - Oak grey



Product: WoW - Solid Old brown



Product: WoW - Oak Rough

EVERYTHING EXCEPT USUALLY...

The exceptional variety of luxurious wood veneers that RoHol has to offer extends even further when considering the additional selection of exciting surfaces, structures and gradings. These enable each product to have a unique appearance and thus emphasize its individual character.

Experience the extraordinary world of **SURFACES, STRUCTURES AND GRADINGS**



copyright NIEMEYER BARDESIGN GmbH

02 GALAXY

The wood that shines.

Wonderfully warm high-grade timbers really start to shine at RoHol. With the help of black light, our wood becomes a dazzling highlight in any interior. Furthermore, the combination of Galaxy with an end-grain surface, or a more structured and ambitious surface texture (e.g. Crack or Rough), ultimately evokes a really strong feeling of originality.



copyright Privathaus

01 OAK CRACK

Stylish design, unique look.

Crack's strong structure presents a unique experience for the senses.

Streaks of the colours brown, black or white, flow through the marked crevices and create a truly exceptional veneer surface.



The 3D surface - feel the difference.

Whilst RoHol's 3D surfaces definitely offer a new visual experience, it is mainly the incredible texture and the feel of the surface that make them stand out. Our Rough and Wave selection offer the most diverse veneer processing methods which result in methods which create incredible textures - you will certainly feel the difference!

03 ROUGH



copyright Puertas Golpe





copyright Gasthof Breit

04 BRONCÉ+

Natural colour changes.

Taking into account the current trends in furniture and interior design, a variety of our noble veneers are now also available in darker natural tones. The Broncé+ effect is achieved by using a special treatment process that changes the tone of the wood in a natural way. The process guarantees tone changes that penetrate the whole veneer and therefore further processing steps such as milling, brushing or sanding present no problems at all.



copyright Wöstmann Markenmöbel

06 END GRAIN

Design that comes from the heart.

From a technical point of view, this remarkable-looking veneer, is created by merely changing the cutting angle. From an optical point of view, a whole new world of design possibilities unfold. We offer a variety of over 100 high-grade timbers; all of which are available with an end-grain cut. There are even more possibilities when considering the potential layouts; whether using whole discs, partial segments or rectangles.



copyright 24 hours

05 +F / DESIGN JOINT

The design connection.

Planks that have been in use for decades, or even centuries, in furniture, floors or wall/ceiling cladding do, over the years, adapt their form; they swell or shrink through exposure to fluctuating temperatures and humidity.

As a result, the joints and seams develop varying widths and depths as time passes.

Our ‚F+‘ noble veneers really capture the natural beauty of this perpetual process where the forces of time, heat and humidity meet.



copyright Wöstmann Markenmöbel



copyright Designshop



copyright Designshop



copyright NIEMEYER BARDESIGN GmbH



copyright 24 hours



copyright NIEMEYER BARDESIGN GmbH



copyright NIEMEYER BARDESIGN GmbH



copyright 24 hours



copyright 24 hours



copyright Wöstmann Markenmöbel



copyright Designshop



copyright Wöstmann Markenmöbel

copyright Wöstmann Markenmöbel



copyright Designshop

SAUNA & SPA

RELAX WITH DESIGN.

RoHol developed the original RoHol SaunaPly and SPress walls for sauna and wellness areas several years ago. These special products have proven themselves over the years in demanding sauna use without any problems. In addition, every sauna user can **breathe freely** and know that the air is safe. SPress and SaunaPly products are **glued formaldehyde-poor** and emit no pollutants whatsoever. This shows, among other things, that the Austrian limit value for formaldehyde is undershot by more than 50% and so at the limit of the measurability.



- Easy assembly and processing
- Time and cost savings regarding construction and assembly
- Unlimited design possibilities
- Available in more than 100 different precious woods but also as a raw material for own planking e.g. shingles profile panels
- Ideal thermal insulation values
- Low emissions (still by 120 degrees)
- Compliance with all relevant standards

Sauna & Spa



ORIGINAL
SaunaPly

Original RoHol SaunaPly

... was especially developed with Sauna construction in mind. This panel emits less formaldehyde than solid, non-glued wood, even at high temperatures. And, considering the over 100 wood species on offer, it also offers brand new design possibilities for creating your own personal Sauna project.

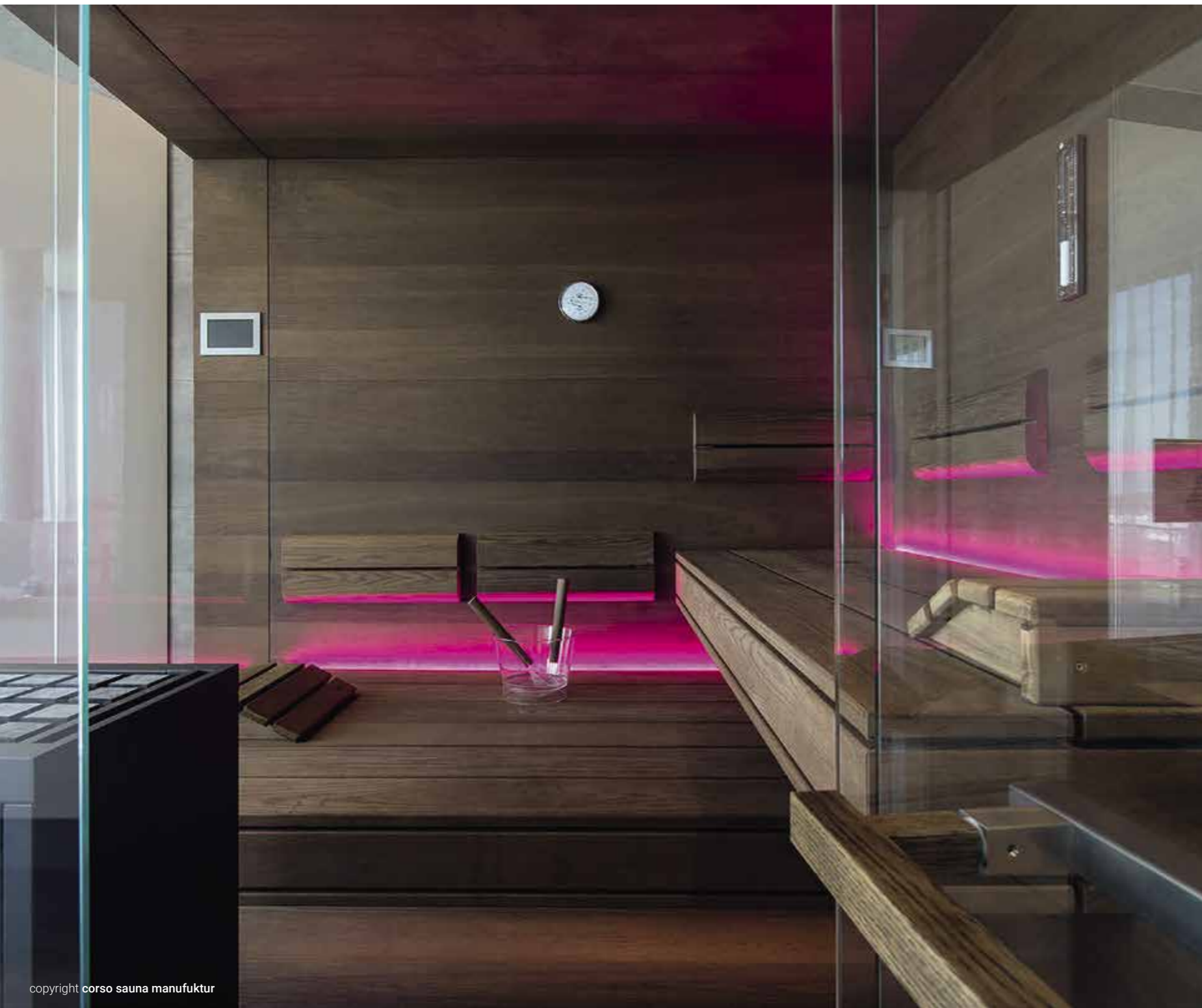
- **Main thickness:** 16 mm
- **Thicknesses:** on request
- **Dimensions:** 2500 x 1250 mm; 2500 x 1830 mm; 3380 x 1250 mm
- Also available with a dark core
- Other dimensions on request
- **Bonding:** D4 in accordance with DIN EN 204, or EN 314 Part 2, Class 2



ORIGINAL
SPress®

Original RoHol SPress

... combines the construction of the sauna interior, the insulation and the substrate in an organic composite material. The standard size of the board is 2500 x 1250 mm with a lengthwise and transverse outer layer available. SPress is attainable in over 100 different high-grade timbers, either as a raw material with a rotary-cut veneer as the outer layer, or with a face veneer. It is also available in 2 different assembly variants.



copyright corso sauna manufaktur



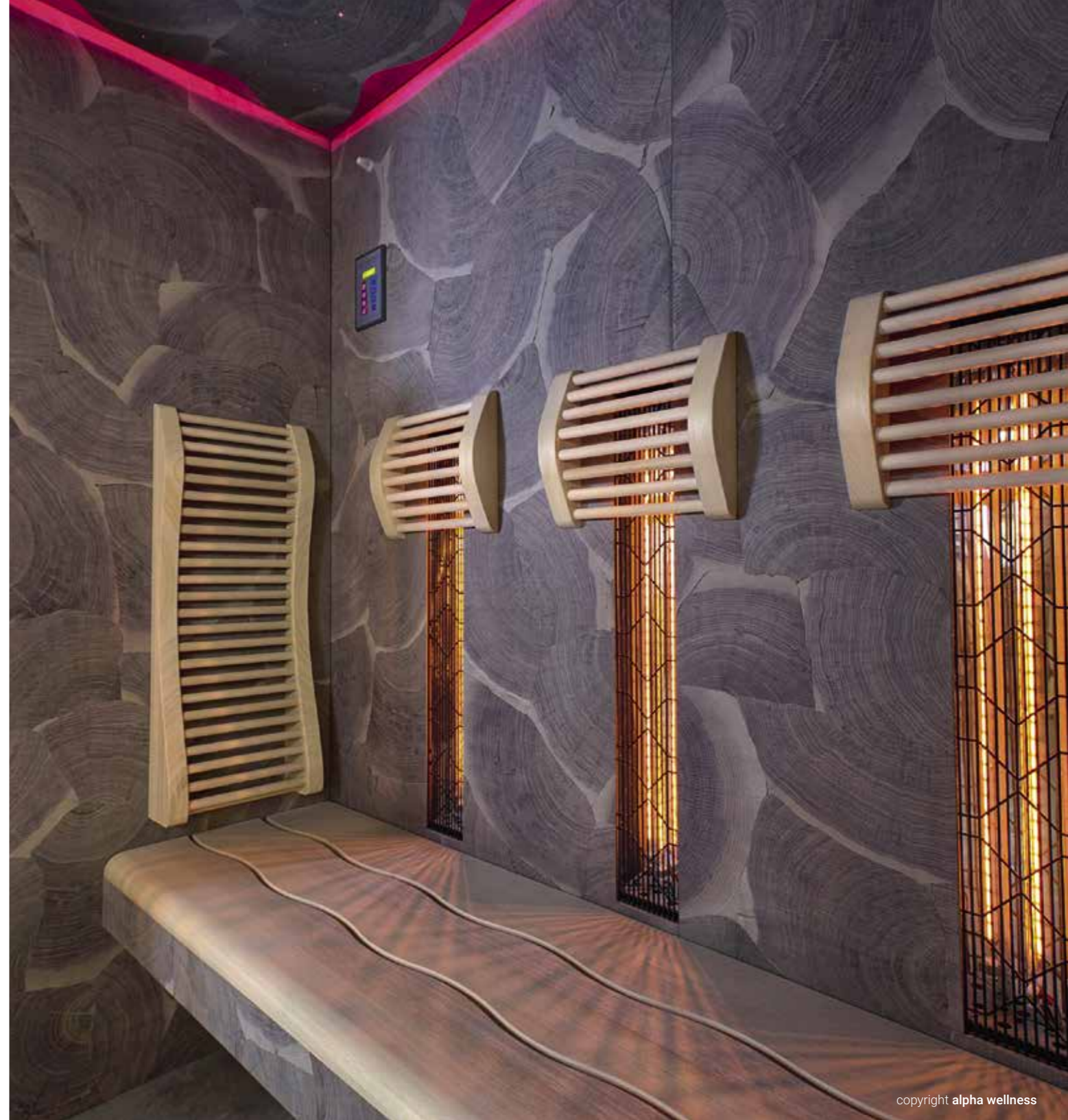
copyright corso sauna manufaktur



copyright corso sauna manufaktur



copyright alpha wellness



copyright alpha wellness



copyright Gahleitner Saunamanufaktur



copyright alpha wellness



copyright corso sauna manufaktur



copyright Landhaussauna Guglwald ©Hotel Guglwald



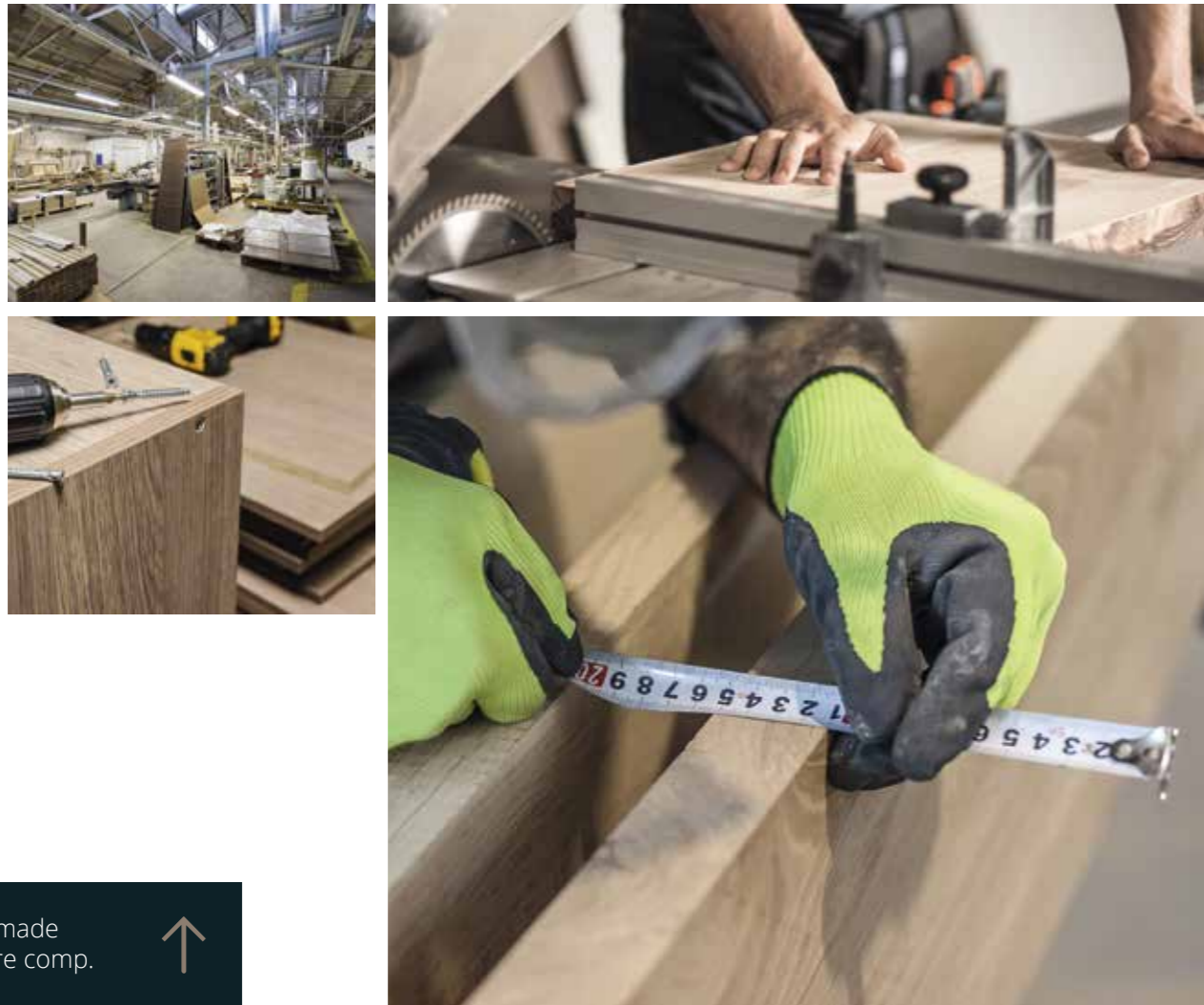
copyright Gahleitner

READY-MADE FURNITURE COMPONENTS

You want - we think.

The efficient solution for the furniture industry, property furnishers, shop fitters and vehicle construction.

Processed and prefabricated by skilled craftsmen to the highest standards, ready-to-use pieces of furniture are created that are convincing in terms of design, function and efficiency. In close coordination with customers, very particular requirements are taken into account to develop optimum solutions.



Ready-made furniture comp.



THE ADVANTAGES - SPECIAL FEATURES

Benefits.

The furniture industry and property furnishers frequently obtain RoHol noble veneer boards with fixed board dimensions. This both economises on offcuts of high-quality board and involved cutting work, while minimising inventory holding.

Special features.

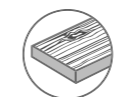
Edge work, drilled holes, brushing, surface treatments (varnishing, oiling, and more) can be performed, from certain quantities.

Visible edges, rounded or bevelled, as well as milling in board surfaces allow countless creative possibilities.

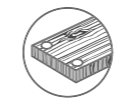
Dimensions.

Blank cuts can be produced in all desired formats.

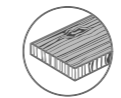
> POSSIBILITIES



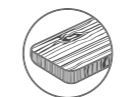
Edge work



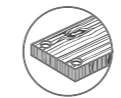
Drilled holes



Surface treatments



Rounded / bevelled edges



Milling





PRODUCTS

RoHol[®]
The Austrian Wood Composer

RoHol Vertriebs GmbH

Hauptstraße 31, A-4581 Rosenau/Hengstpaß

Tel.: +43 (0) 7566 / 600 – 0

Fax: +43 (0) 7566 / 600 – 37

office@rohol.at

