

FOLLOW YOUR NATURAL INSTINCT

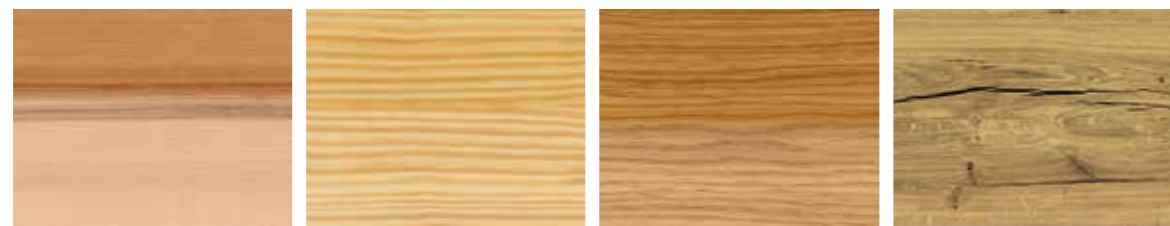
RoHol
Do you feel wood?

RoHol[®]
The Austrian Wood Composer

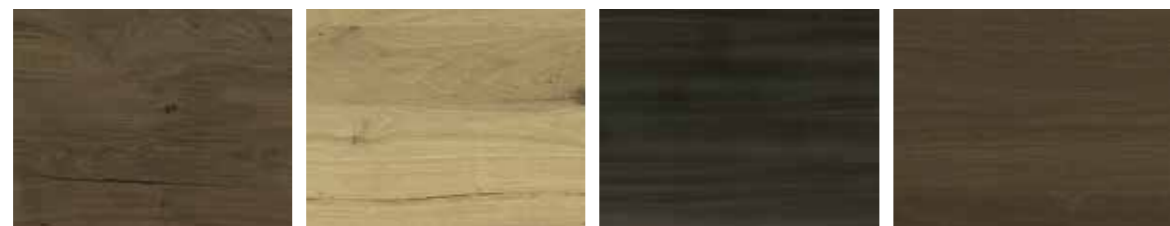
www.rohol.at



Maple Alder Burl Birch Beech



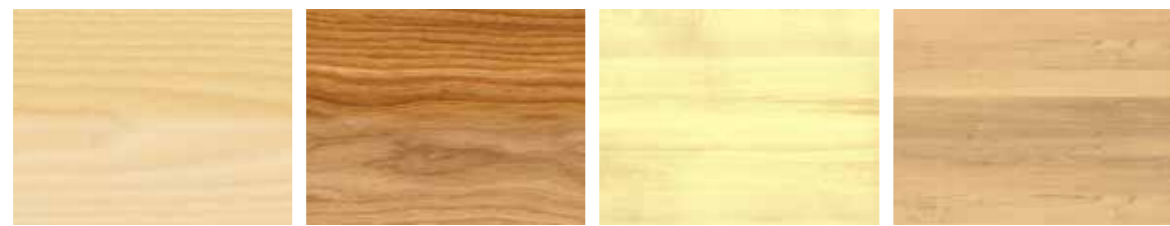
Hearted Beech Caroline-Pine Oak european Oak Crack



Oak Crack Broncé+ Oak Npur Oak fumed Oak Broncé+



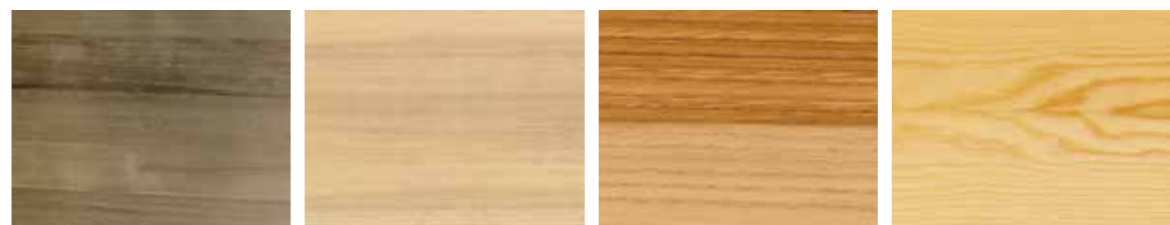
Oak Old Oak Rough Oak knotty Red Alder



Ash Ash colorful Aspen Aspen Broncé+



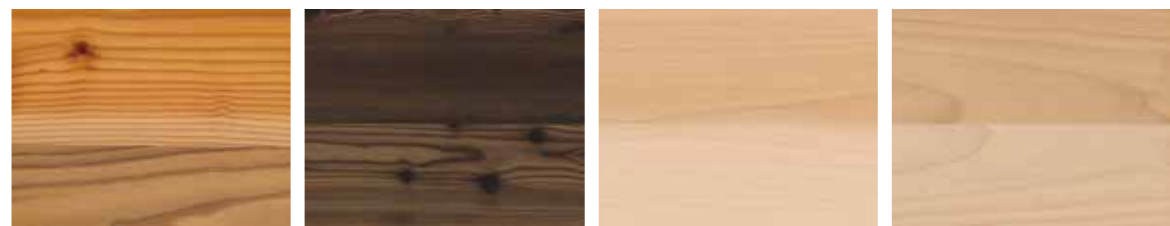
Spruce Spruce knotty Broncé+ Spruce knotty Hemlock



Hemlock Broncé+ Hemlock Pur Sweet Chestnut Scotch Pine



Pine knotty American Cherry Cherry european Larch



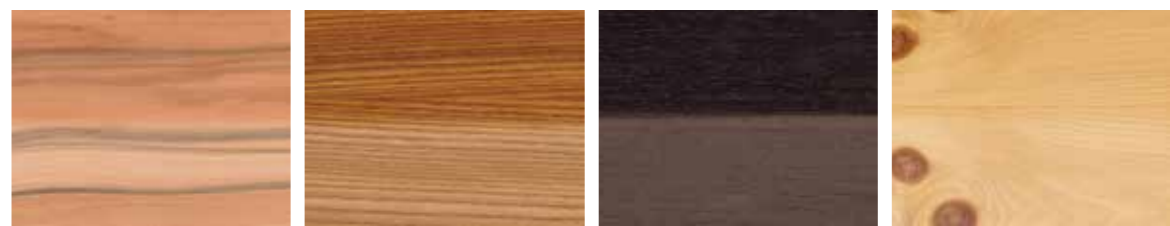
Larch Old Larix Linden Maple



American Walnut Walnut european Oregon-Pine Robinia



Sapeli Silver Fir Teak Tekka



Tineo Elm Wenge Stone Pine

Veneer selection



Our extensive selection of wood veneers, alongside the many options on offer for further refinement, mean that almost any veneer-desire can be satisfied at RoHol.

More types of wood are available on request from your RoHol representative.

FLEECE-IT - NOBLE VENEERS SPLICED AND PRESSED ON FLEECE

Veneers spliced and pressed on fleece.

Fleece-It is a new product line from RoHol, which represents a selection of the most popular noble veneers spliced and pressed on fleece. Fleece-It is available in more than 100 species of wood and many grades and textures, with the following standard range in stock.

Standard-Dimension

2800 x 1250 mm (other dimensions on request)



Fleece-It



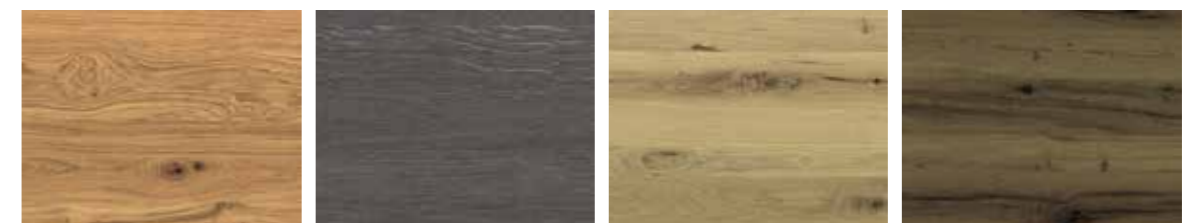
THE ADVANTAGES - STABILITY

Fleece-It advantages.

The fleece-back lamination provides an optimum balance of flexibility and stability. It can be easily glued to a variety of substrates, pressed on and so manufactured with the desired surface finish. The flexibility of Fleece-It also allows curved and round materials to be finished with a refined yet naturally beautiful wood surface.

- Easy to machine and work with
- Decorative, dark background lets cracks come to life
- Can be sanded, brushed, painted and oiled
- Excellent for curved sections
- Can be rolled
- Shipping of small quantities in a cardboard box is available
- Available in more than 100 noble veneers

STANDARD-PROGRAM



Oak knotty

Oak grey Npur

Oak Npur

Reclaimed Oak



Oak knotty Rough

Oak Broncé+ Npur

Oak Crack

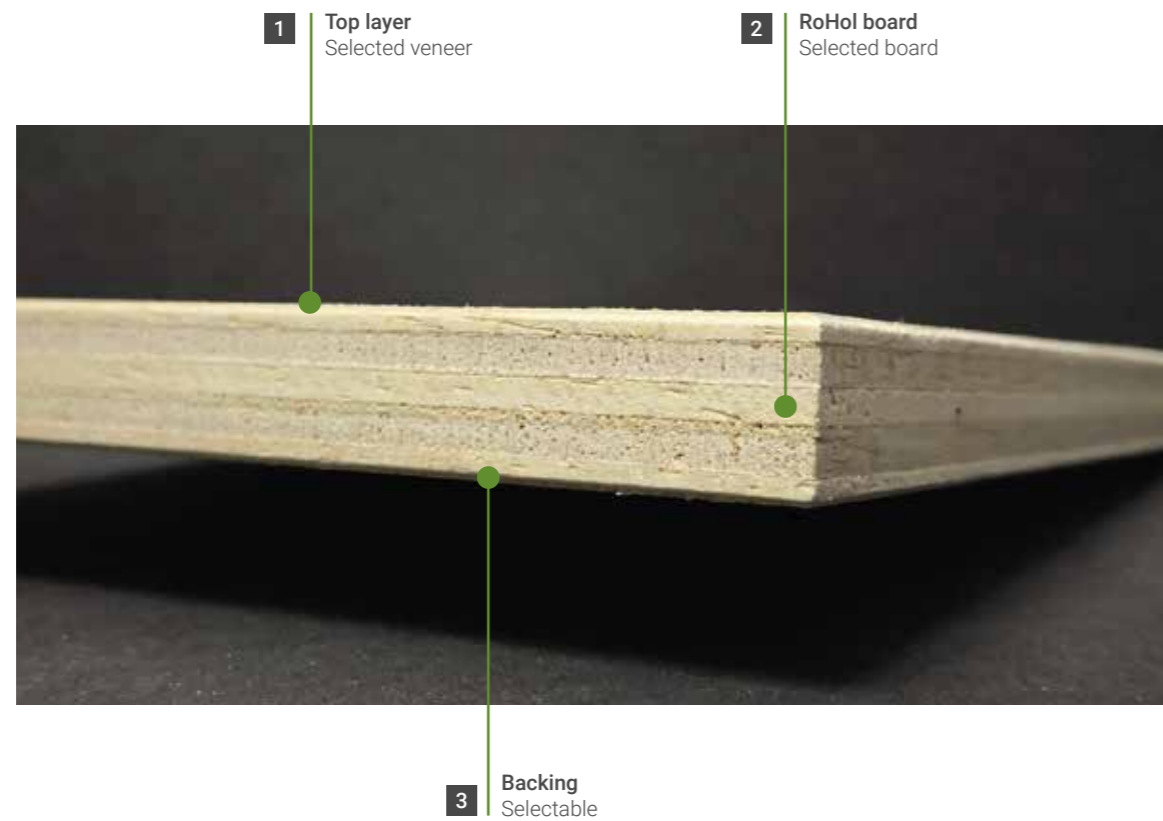
Larix

VENEERED BOARDS - CONSTRUCTION

Our veneered boards stand out because of the diversity in workmanship and application. RoHol transforms various substrates into designer veneer objects; clearly evidencing our strengths and individuality.

Additional substrates -

Our strength lies in the unlimited composition of veneered boards.



Veneered boards construction



HIGH-QUALITY VENEERED BOARDS TECHNICAL PLYWOOD FLEXIBLE PLYWOOD

VENEERED
CHIPBOARD



VENEERED
BLOCKBOARD



VENEERED
MDF BOARD



VENEERED BIRCH
PLYWOOD BOARD



VENEERED
HARDBOARD



VENEERED GYPSUM
FIBRE BOARD



ALUPRESS



FLEXIPRESS



FLEXIPRESS -
„BASIC“ AND „FINISH“



WOW - WOOD ON WALLS

Simply practical - Simply stylish - Simply WoW

WoW which, by the way, stands for Wood on walls, is our new, innovative and customizable design system for interior walls. The planks of raw natural wood are resource-friendly, easy to handle and the top-quality processing produces a surface which is warm and appealing and integrates perfectly into timeless interior designs.

Standard-Dimension: 970 x 185 mm

Thickness: 3 mm / appr. 6,5 mm for Solid Old products

Total thickness: 4 mm / 7,5 mm for Solid Old incl. adhesive tapes

Product construction: luxurious wood veneer on wood-fibre beams

Program: Maple, Oak Broncé+ Sprinkled, Oak Nasty, Oak Crack, Oak grey Sprinkled, Oak Rough, Oak Rough Sprinkled, Spruce Broncé+, Spruce Broncé+ Sprinkled, Solid Old brown, Solid Old grey, Stone Pine, Stone Pine Sprinkled



WoW



PRACTICALLY - TIMELESS

Practical and contemporary designs.

WoW suits contemporary interior design down to the ground. It's not merely the format but also the diversity within the WoW line that really meets the needs of the modern interior design spirit and definitely takes care of providing you your own personal WoW effect at home! Rest assured - the whole WoW line is produced using timber from sustainably-managed forests. The PEFC™ certificate not only indicates the use of sustainable forestry but furthermore, it guarantees that the natural habitats for local flora and fauna are conserved and preserved; for you, for us and for the future!

QUICK INSTALLATION

With the help of double-sided adhesive strips that are pre-attached at the factory, the installation of WoW becomes very easy and uncomplicated. The convenient size also guarantees easy transport and that the panels can be installed by one person working alone!



Maple



Oak Broncé+ Sprinkled



Oak Crack



Oak grey Sprinkled



Oak Rough



Spruce Broncé+



Solid Old brown



Solid Old grey



Stone Pine



SAUNA & SPA

RELAX WITH DESIGN.

RoHol developed the original RoHol SaunaPly and SPress walls for sauna and wellness areas several years ago. These special products have proven themselves over the years in demanding sauna use without any problems. In addition, every sauna user can **breathe freely** and know that the air is safe.. SPress and SaunaPly products are **glued formaldehyde-poor** and emit no pollutants whatsoever. This shows, among other things, that the Austrian limit value for formaldehyde is undershot by more than 50% and so at the limit of the measurability.



- Easy assembly and processing
- Time and cost savings regarding construction and assembly
- Unlimited design possibilities
- Available in more than 100 different precious woods but also as a raw material for own planking e.g. shingles profile panels
- Ideal thermal insulation values
- Low emissions (still by 120 degrees)
- Compliance with all relevant standards

Sauna & Spa



ORIGINAL
SaunaPly

Original RoHol SaunaPly

...was especially developed with Sauna construction in mind. This panel emits less formaldehyde than solid, non-glued wood, even at high temperatures. And, considering the over 100 wood species on offer, it also offers brand new design possibilities for creating your own personal Sauna project.

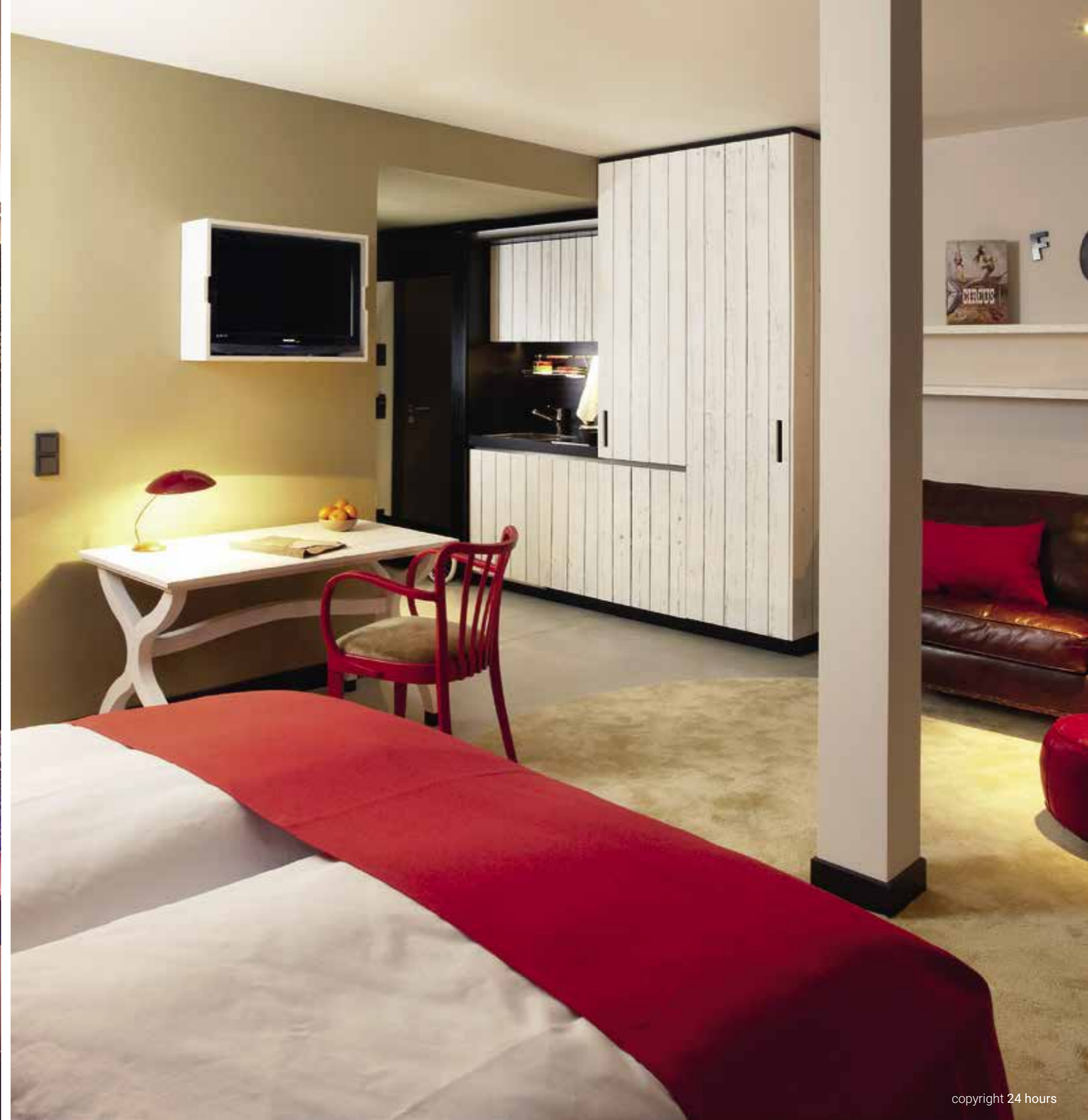
- **Main thickness:** 16 mm
- **Thicknesses:** on request
- **Dimensions:** 2500 x 1250 mm; 2500 x 1830 mm; 3380 x 1250 mm
- Also available with a dark core
- Other dimensions on request
- **Bonding:** D4 in accordance with DIN EN 204, or EN 314 Part 2, Class 2



ORIGINAL
SPress®

Original RoHol SPress

... combines the construction of the sauna interior, the insulation and the substrate in an organic composite material. The standard size of the board is 2500 x 1250 mm with a lengthwise and transverse outer layer available. SPress is attainable in over 100 different high-grade timbers, either as a raw material with a rotary-cut veneer as the outer layer, or with a face veneer. It is also available in 2 different assembly variants.





copyright Wöstmann Markenmöbel



copyright Designshop



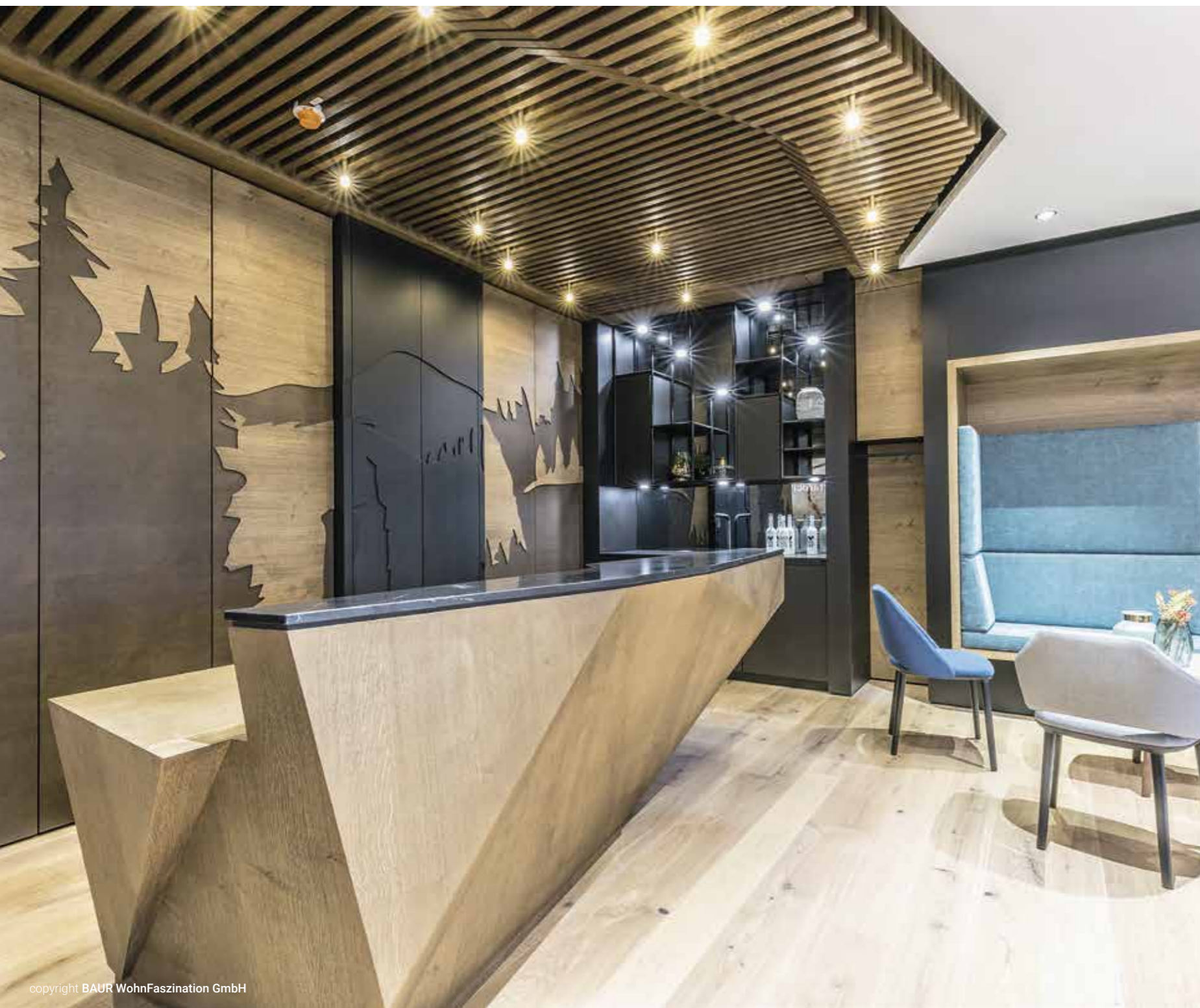
copyright Designshop



copyright Wöstmann Markenmöbel



copyright Wöstmann Markenmöbel





copyright SECO | Saudi Arabien



copyright SECO | Saudi Arabien



copyright SECO | Saudi Arabien



copyright SECO | Saudi Arabien



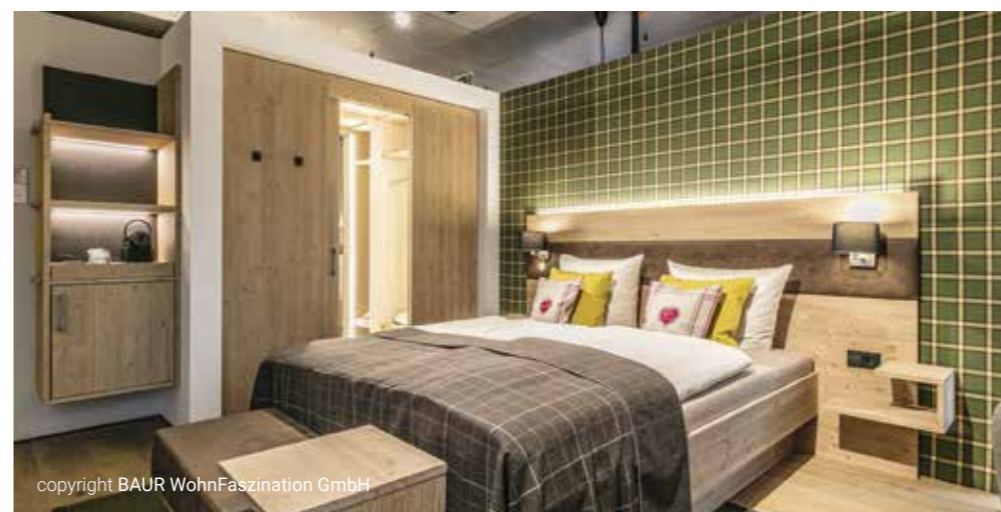
copyright BAUR WohnFaszination GmbH



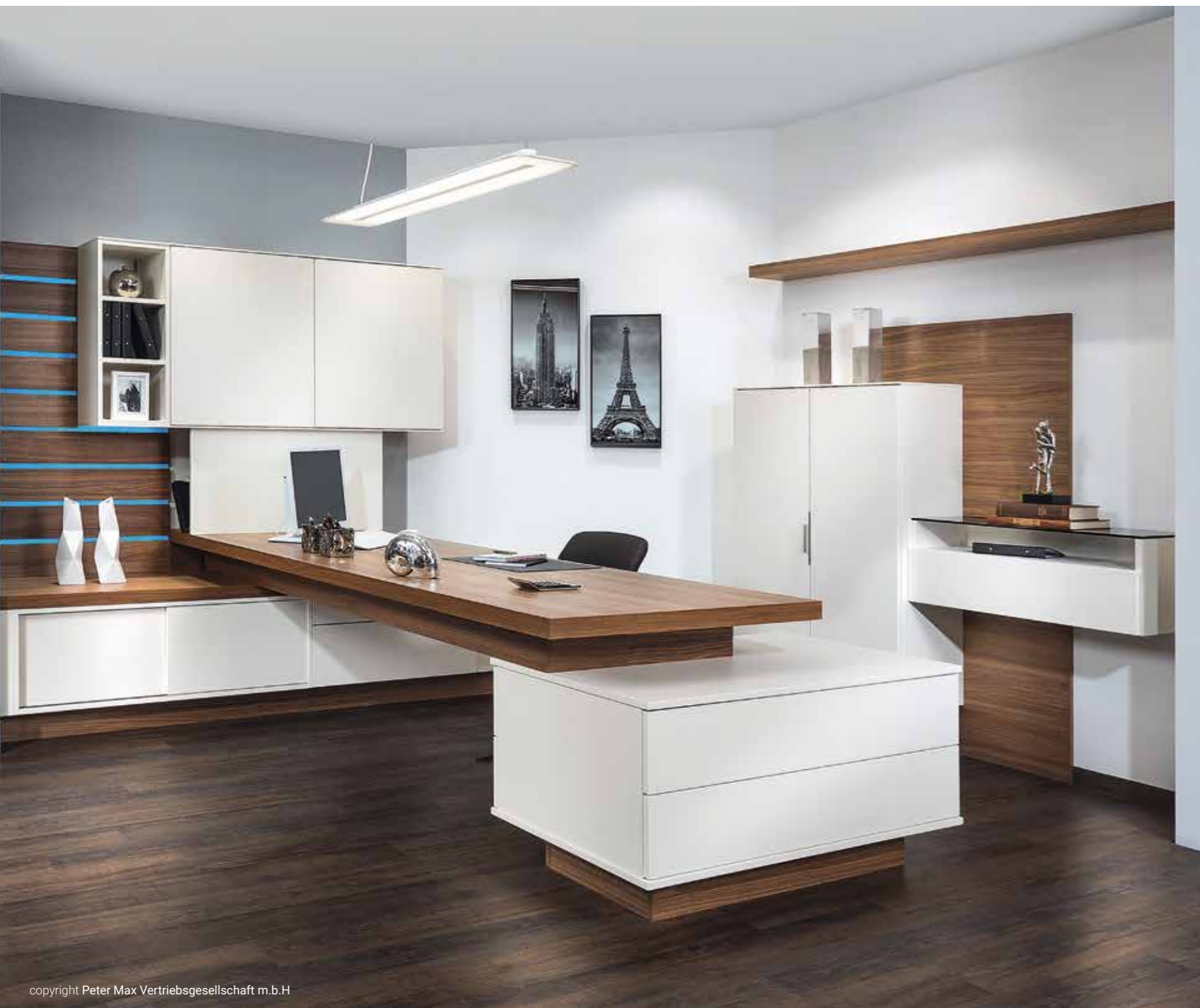
copyright BAUR WohnFaszination GmbH



copyright BAUR WohnFaszination GmbH



copyright BAUR WohnFaszination GmbH



copyright Peter Max Vertriebsgesellschaft m.b.H



copyright Peter Max Vertriebsgesellschaft m.b.H



copyright Peter Max Vertriebsgesellschaft m.b.H



copyright BAUR WohnFaszination GmbH



copyright BAUR WohnFaszination GmbH



copyright BAUR WohnFaszination GmbH



Product: WoW - Eiche Crack



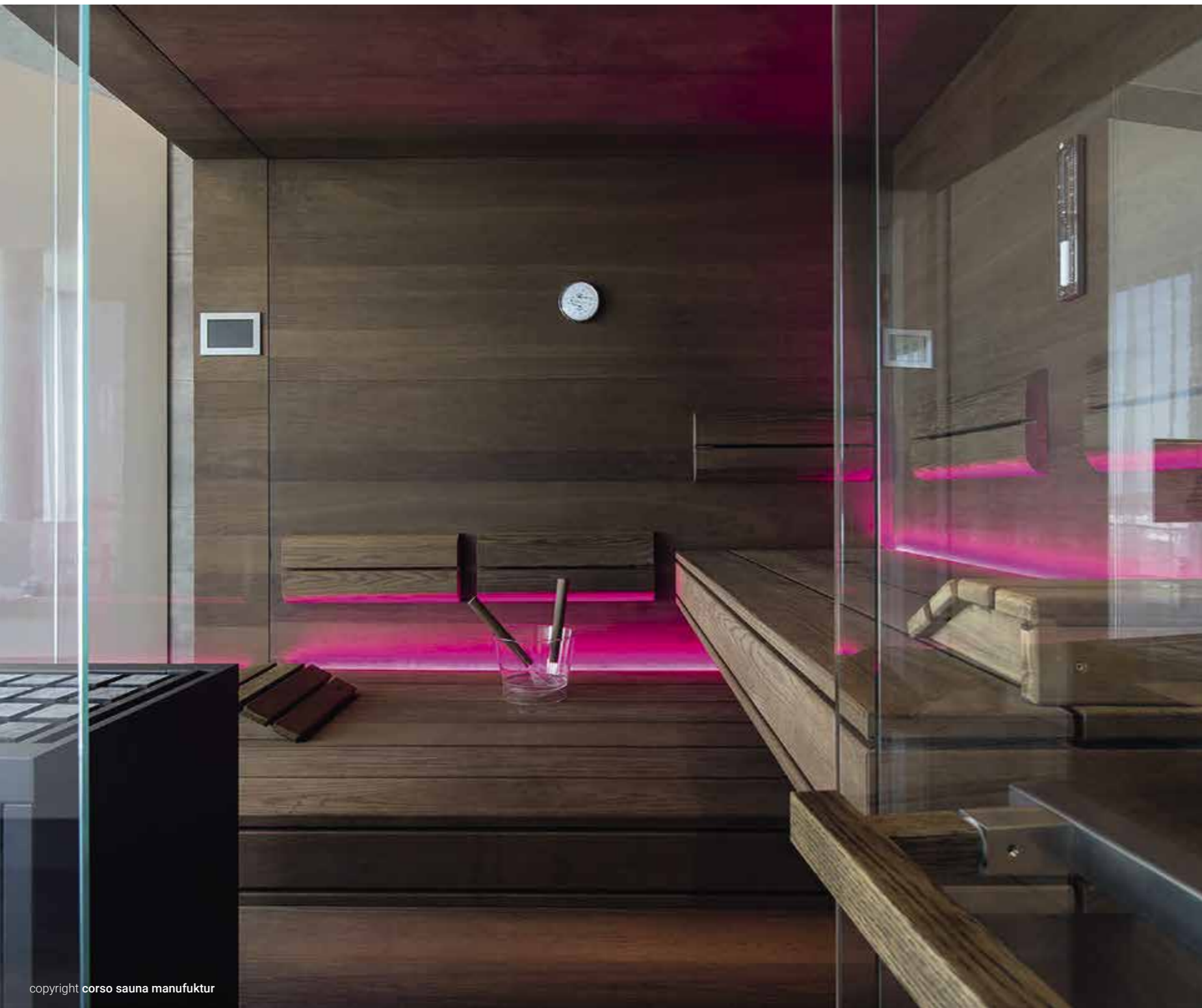
Product: WoW - Eiche grau



Product: WoW - Solid Old braun



Product: WoW - Eiche Rough



copyright corso sauna manufaktur



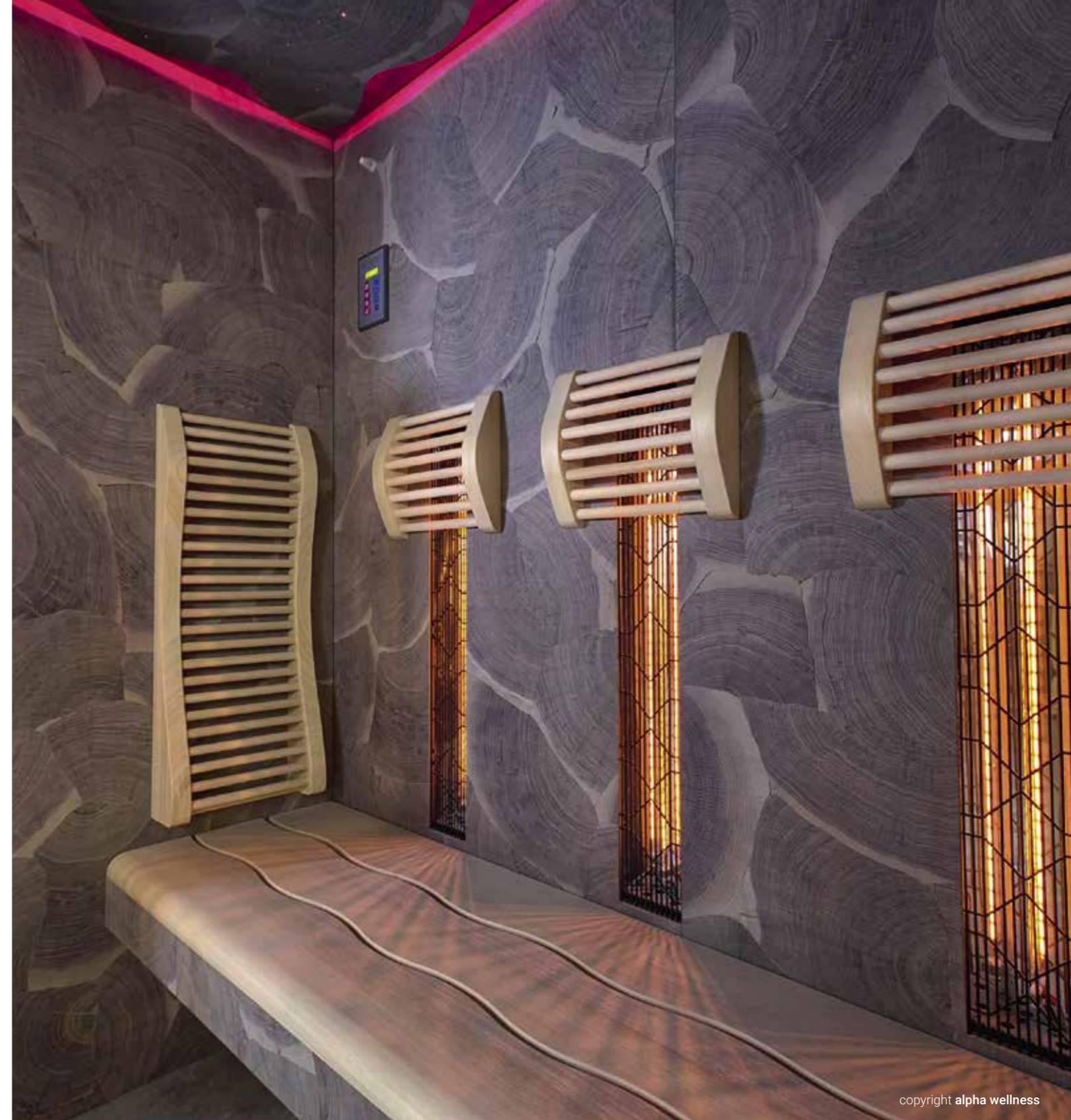
copyright corso sauna manufaktur



copyright corso sauna manufaktur



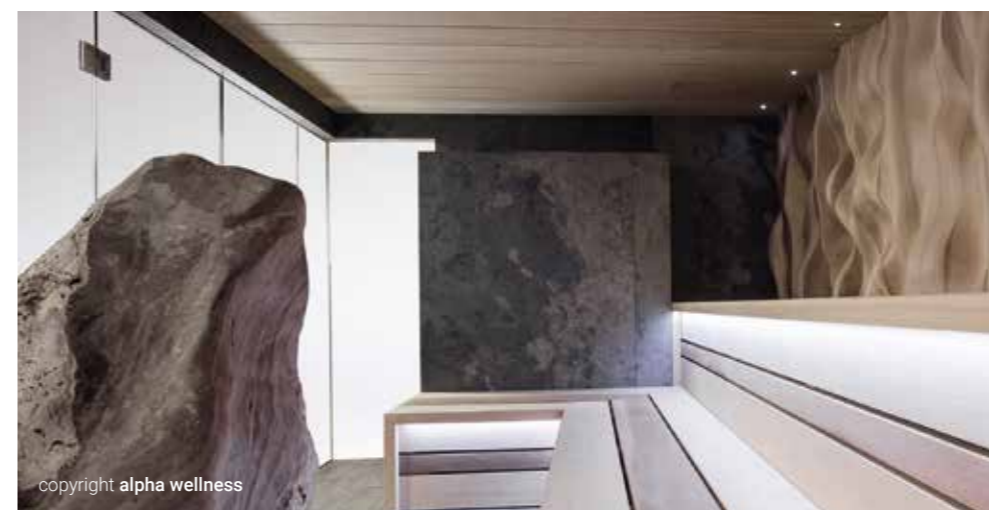
copyright alpha wellness



copyright alpha wellness



copyright Gahleitner Saunamanufaktur



copyright alpha wellness

RoHol[®]
The Austrian Wood Composer

RoHol Vertriebs GmbH
Hauptstraße 31, A-4581 Rosenau/Hengstpaß
Tel.: +43 (0) 7566 / 600 – 0
Fax: +43 (0) 7566 / 600 – 37
office@rohol.at

